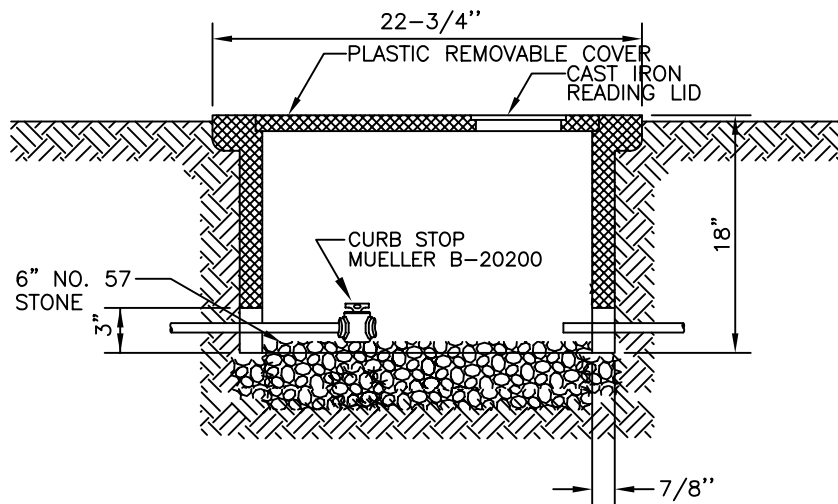


PLAN



ELEVATION

DATE: 5/6/94	REVISIONS		STANDARD DETAIL STANDARD 3/4" WATER METER CONNECTION	LEXINGTON COUNTY JOINT MUNICIPAL WATER AND SEWER COMMISSION
	9/1/97	MISC. REVISIONS		
SCALE: NTS	6/7/00	MISC. REVISIONS	FILE NO. WL007	