

AIR CUSHIONED SWING CHECK VALVE
BY DEZURIK - APCO CVS SERIES 250
OR APPROVED EQUAL (TYP)

FLANGED TEE
(NOTE 3)

RJ DIP 90° BEND

AIR RELEASE
VALVE ASSEMBLY
(NOTE 1)

CONCRETE PIPE
SUPPORT

PLUG VALVE WITH
HANDWHEEL BY DEZURIK OR
APPROVED EQUAL (TYP)
(NOTE 2)

3" TIDE FLEX DUCKBILL VALVES OR
APPROVED EQUAL ON VAULT DRAIN
LINE

GRAVITY SEWER
INFLUENT PIPE
WITH INSIDE DIP
TEE DROP

NON-SHRINK
GROUT

"S" (MIN.)
(NOTE 4)

8' Ø (I.D.) PRECAST
CONCRETE WET WELL
(NOTE 5)

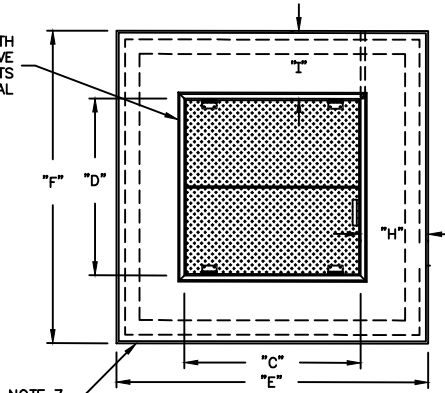
SECTION

(Ø ELEV BELOW CONCRETE TOP)

NOTES:

1. REFER TO JMWSC STANDARD DETAILS: TYPICAL PUMP STATION W/O BYPASS PUMP SITE PLAN AND TYPICAL PUMP STATION SECTION.
2. HANDWHEELS SHALL BE ORIENTED TO AN EASILY OPERABLE POSITION.
3. PROVIDE TEE WITH A 1/4" NPT TAP ON TEE, 1/4" SST NIPPLE, 1/4" X 1/4" FNPT X FNPT LATCH LEVER SST BALL VALVE BY APOLLO, AND GLYCERINE FILLED PRESSURE GAUGE WITH A 0-150 PSI RANGE.
4. PUMP SHALL BE SPACED APART PUMPS PER MANUFACTURER'S REQUIREMENTS.
5. PROVIDE 8' DIAMETER WETWELL WITH EXTENDED CONCRETE FOOTING BASE FOR PUMPS WITH 8" DISCHARGE AND SMALLER. FOR PUMPS WITH DISCHARGES LARGER THAN 8", COORDINATE SIZE OF WET WELL WITH JMWSC.
6. PROVIDE 6" (MIN.) SPACING BETWEEN PUMP AND HATCH OPENING ON ALL SIDES.
7. PROVIDE CHAMFER ON WET WELL TOP, VALVE VAULT TOP, AND CONCRETE PAD.
8. REFER TO ELECTRICAL PLAN DRAWINGS FOR ALL ELECTRICAL RELATED COMPONENTS.
9. RTU HOUSED WITHIN CONTROL PANEL.

DOUBLE LEAF ALUMINUM ACCESS HATCH WITH
PAD LOCKABLE HASP AND PROTECTIVE
GRATING, SERIES S2S BY HALLIDAY PRODUCTS
OR APPROVED EQUAL

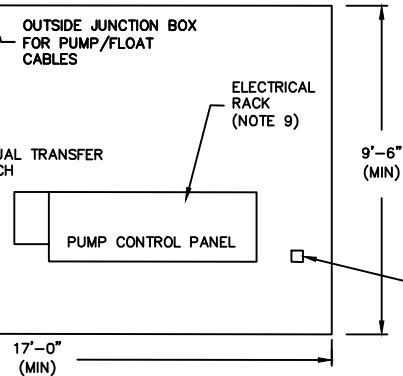


NOTE 7

DOUBLE LEAF ALUMINUM ACCESS HATCH WITH
PAD LOCKABLE HASP AND PROTECTIVE
GRATING, SERIES S2S BY HALLIDAY PRODUCTS
OR APPROVED EQUAL (NOTE 6)

DIP VENT WITH SST
SCREEN

1'-8"



PLAN

VALVE VAULT DIMENSIONS									
PIPE SIZE	A	B	C	D	E	F	G	H	I
4"	72"	72"	60"	60"	84"	84"	30"	12"	12"
6"	72"	96"	60"	60"	84"	84"	36"	12"	12"
8"	72"	96"	60"	72"	84"	108"	36"	12"	18"
10"	96"	96"	84"	84"	108"	108"	42"	12"	12"
12"	96"	96"	84"	84"	108"	108"	48"	12"	12"

DATE:
10/1/2024

REVISIONS

STANDARD DETAIL

TYPICAL PUMP STATION
PIPING PLAN



JOINT MUNICIPAL
WATER AND SEWER
COMMISSION

SCALE:
NTS

FILE
NO. SS008C