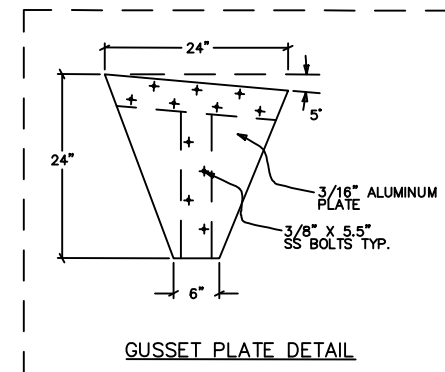
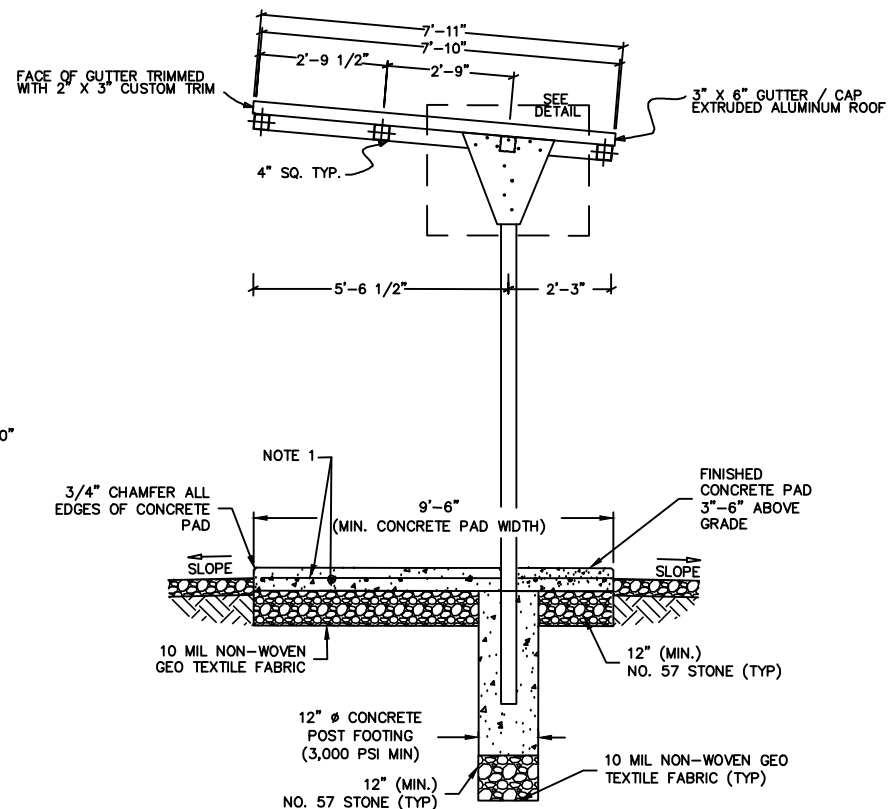


FRONT ELEVATION

NOTES:

1. CONCRETE PAD AND REINFORCEMENT SHALL BE DESIGNED AND STAMPED BY A SC REGISTERED PROFESSIONAL ENGINEER.
2. CANOPY SHALL BE DESIGNED AND STAMPED BY A SC REGISTERED PROFESSIONAL MEET THE MINIMUM DESIGN LOADS:
 - 2.1. 110 MPH WIND LOAD
 - 2.2. 20 LB/FT² LIVE LOAD
 - 2.3. ACTUAL DEAD LOAD
 - 2.4. RISK CATEGORY I
 - 2.5. CODE STANDARD: IBC 2018 & ASCE 7-16
3. ALL NUTS, WASHERS, BOLTS, AND MISCELLANEOUS HARDWARE SHALL BE TYPE 316 SST, PRIMED AND PAINTED WITH INDUSTRIAL GRADE ENAMEL TO MATCH CANOPY.
4. CANOPY PAD/DIMENSIONS SHALL BE ADJUSTED AS REQUIRED TO ACCOMMODATE EQUIPMENT PROVIDED. DIMENSIONS SHOWN ARE MINIMUM REQUIREMENTS.
5. ALUMINUM CANOPY SHALL HAVE FACTORY COATED, BAKED ENAMEL. COLOR TO BE MEDIUM BRONZE UNLESS SPECIFIED OTHERWISE BY OWNER.
6. CONCRETE PAD SHALL BE 6" ABOVE FINISHED GRADE.
7. PROVIDE SEWER LIFT STATION CANOPY MODEL BY HAYES ALUMINUM, INC. OR APPROVED EQUAL.



GUSSET PLATE DETAIL

DATE:
10/1/2024

REVISIONS

STANDARD DETAIL

SCALE:
NTS

TYPICAL PUMP STATION
CANOPY & ELECTRICAL PAD



JOINT MUNICIPAL
WATER AND SEWER
COMMISSION

FILE
NO. SS008D