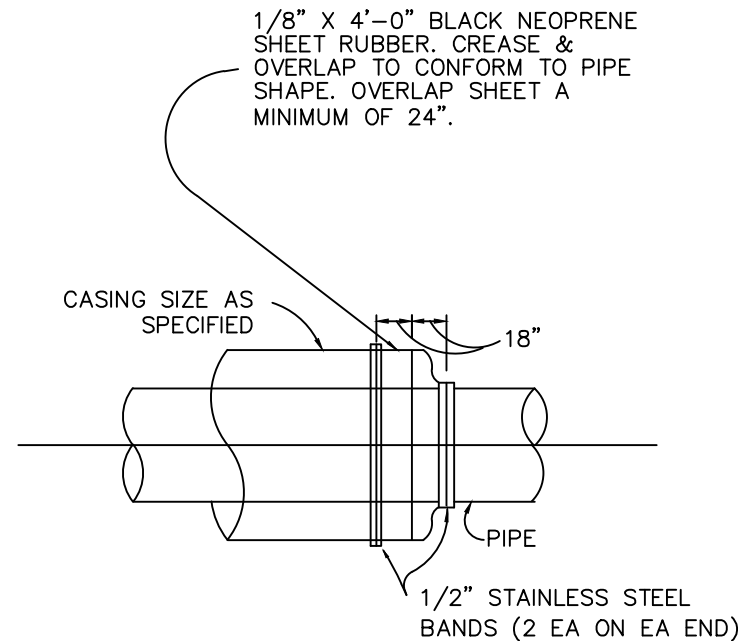
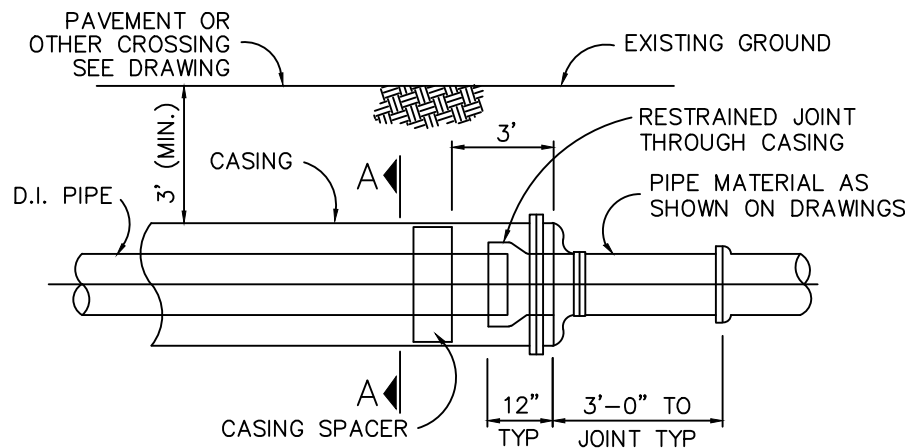


SECTION A-A



CASING END SEAL
(TYP EA. END)

NOTE:

1. ALL PIPING WITHIN CASING SHALL BE RESTRAINED JOINT AND ALL FITTINGS AND/OR VALVES WITHIN 8 LF. OF END OF CASING SHALL BE RODDED BACK TO CASING.
2. REFER TO JMWSC STANDARD SPECIFICATION - UTILITY PIPE JACKING.

DATE:
10/1/2024

REVISIONS

STANDARD DETAIL

SCALE:
NTS

DRY JACK AND BORE ENCASEMENT
AND CARRIER DETAIL



JOINT MUNICIPAL
WATER AND SEWER
COMMISSION

FILE
NO. WL009